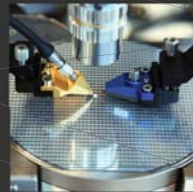




Upgrade your factory to the next level
with the Haesol Smart Factory solution optimized for your plant environment

Smart Factory Solutions

fastMES / fastPOP / fastWMS / fastSPC / fastHMI



5F, 56-1, Guun-ro 63bungil, Gwonseon-gu, Suwon-si, Gyeonggi-do, Korea

Tel +82(0)31-296-2270 / Fax +82(0)31-291-7259



Haesol Smart Factory Solution is

Provides the most optimized way to improve the plant's production environment.

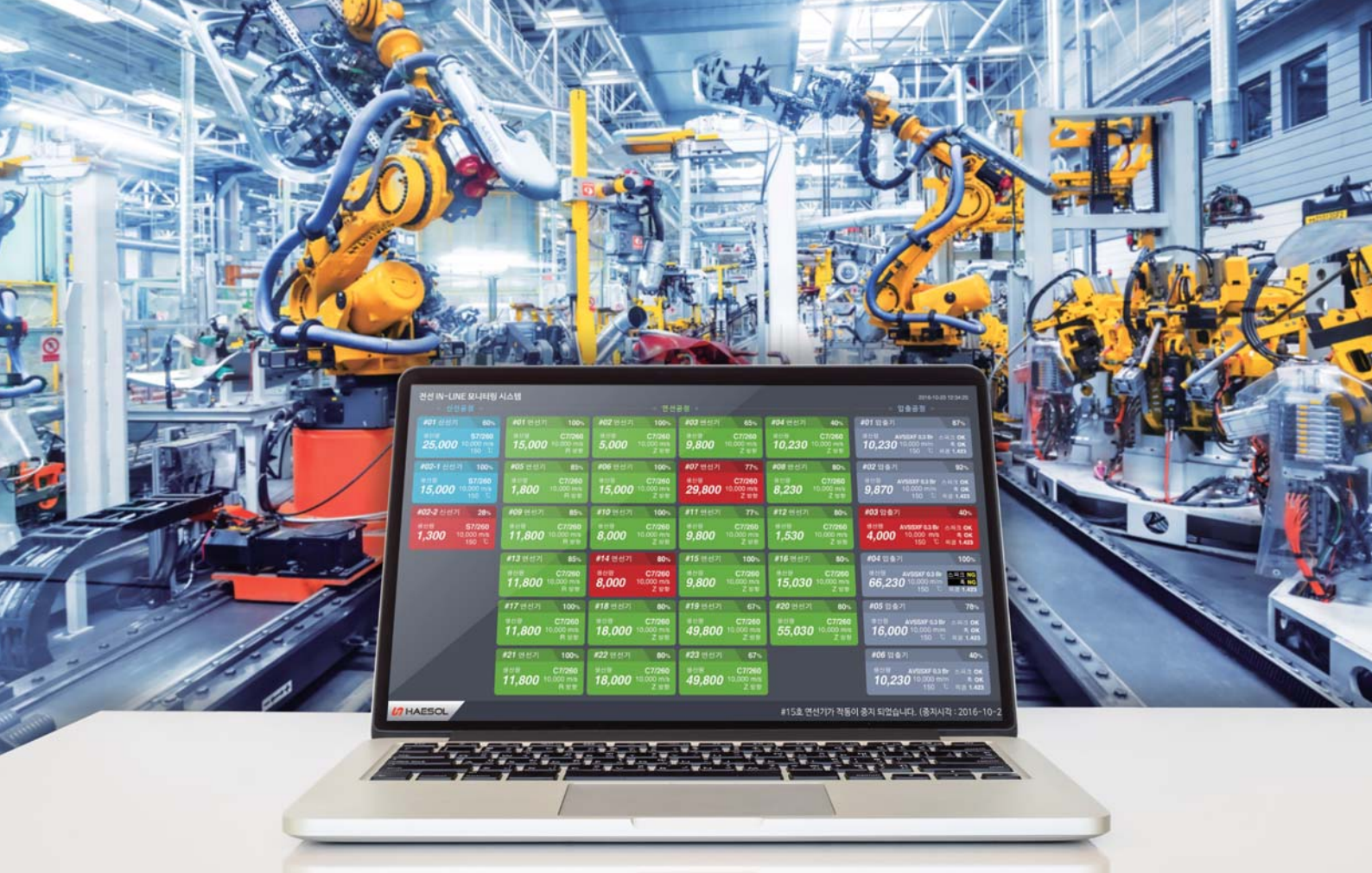
(Integrated production management, logistics management,
statistical process control, facility monitoring / control integration)



Business Partner



Hansol Information Systems is a real-time integrated production management system (MES / POP), which actively contributes to productivity improvement and quality improvement throughout the manufacturing industry. We provide a factory-optimized Smart Factory Solution through the construction of Logistics Management System (WMS), Statistical Process Control (SPC), Facility Monitoring and Control (HMI)



Become a Partner with the Haesol Information Systems!

01

Accurate repair, inventory, real-time information and real-life

02

The time and effort spent on administration and analysis is greatly reduced

03

All flows of material and product moving are tracked without omission.

04

You can see your current utilization rate and yield at any time and at any time.

05

Process and work are naturally standardized.





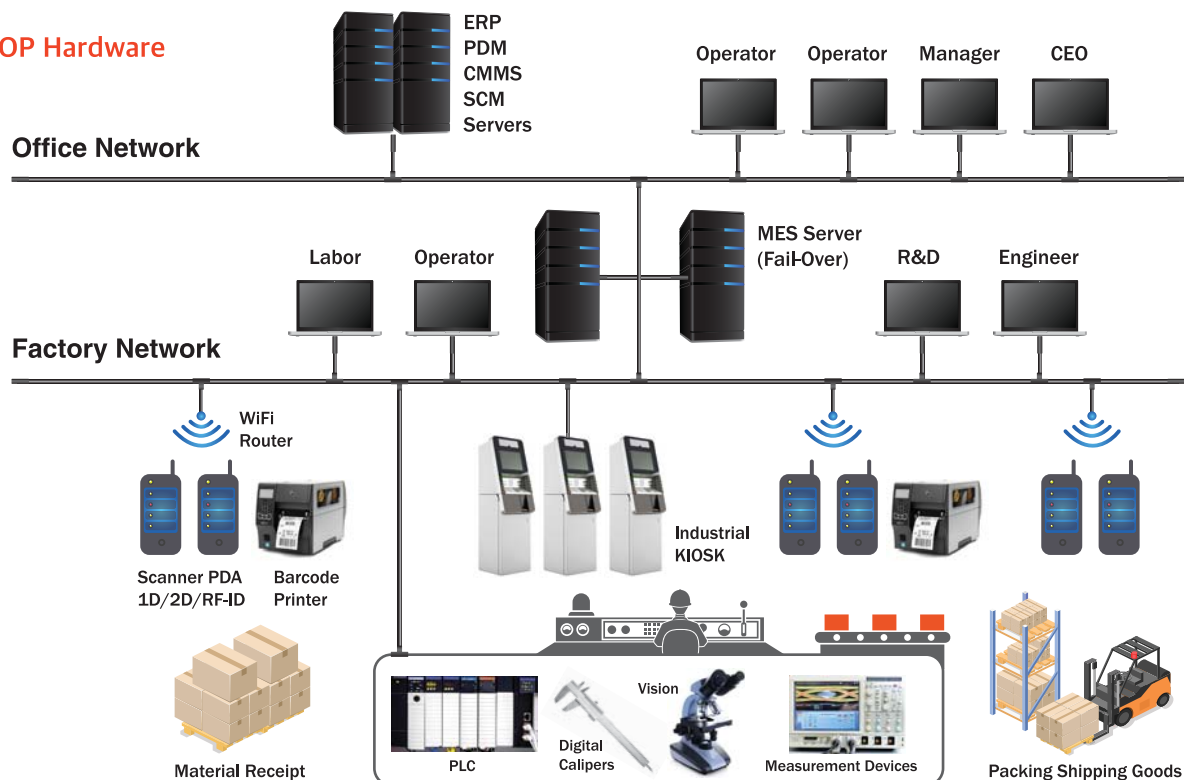
fastMES/POP

fastMES / POP is a manufacturing execution system that controls the site as a system so that production can proceed according to plan and assists quick decision making by collecting and analyzing valuable on-site.

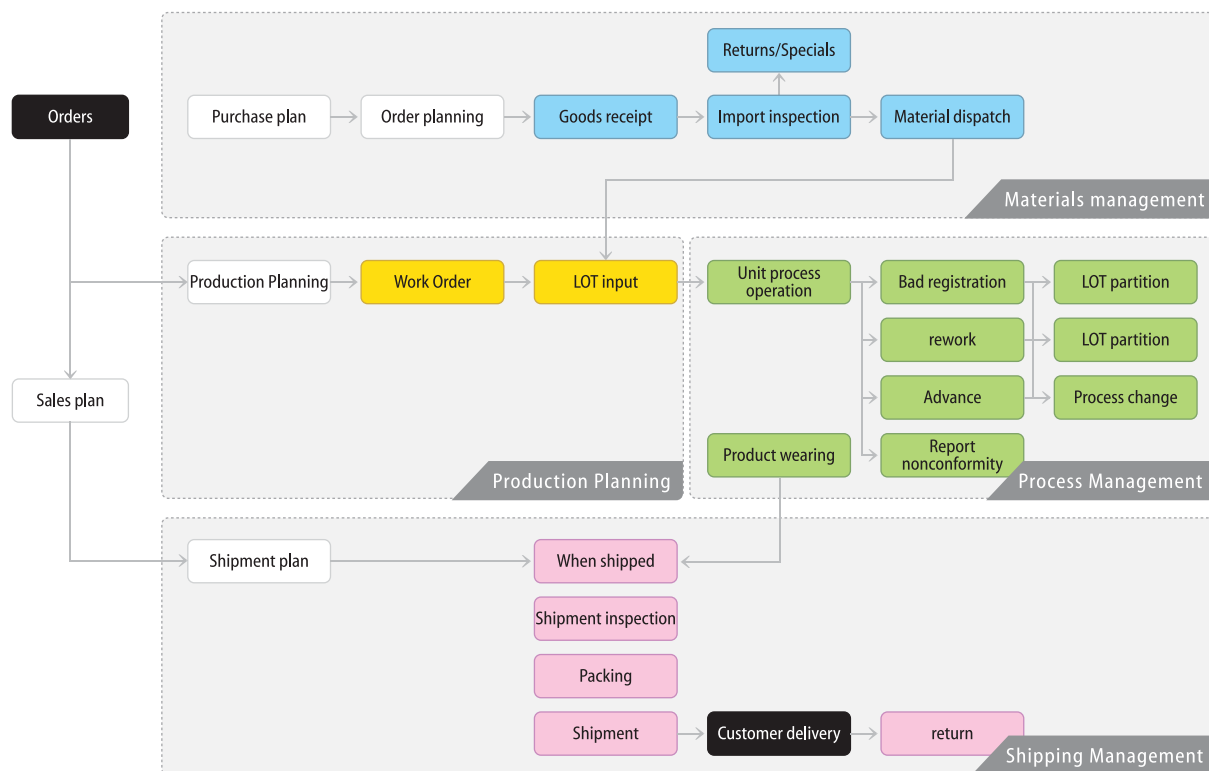
Benefit

Process control and logistics control based on planning and routing / Real-time process information collection and analysis (production capacity, labor time, facility time, defects, process conditions, etc.) / Cost competitiveness through direct effect on productivity improvement, quality improvement, Improving

MES/POP Hardware



MES/POP Process



MES/POP Software

fastMES/POP has a stable structure, and other external modules are standardized together with individual service module in MES Core. Even if the production environment or manufacturing method is increased or changed, it is possible to respond quickly by setting environment and modifying MES

Base management	Materials management	Production Planning	Production Performance
<ul style="list-style-type: none"> Process code management Material/product code management Equipment Code Management Bad code management BOM management Parameter/Recipe Management Spec Management Source/Customer Management User/Operator Management System permissions management Code Master Management 	<ul style="list-style-type: none"> Material receipt Import inspection Returns / Specials Material dispatch 	<ul style="list-style-type: none"> Daily Production Planning LOT knitting Route lookup Material Inventory Status Planned Performance 	<ul style="list-style-type: none"> Status of work Total Production Status Input versus instructions/performance Production efficiency Production monitoring LOT Tracking
공정 관리	설비 관리	품질 관리	출하 관리
<ul style="list-style-type: none"> Displaying work order Process Start / Complete Bad registration Process change Re-worker check LOT Tracking LOT split / merge HOLD / HOLD Release Report inappropriate / Inquiries Facility monitoring 	<ul style="list-style-type: none"> Preventive maintenance management Mold & tool management Troubleshooting Availability Rate Non-moving status Facility efficiency 	<ul style="list-style-type: none"> Defect status Parameter analysis Yield status 	<ul style="list-style-type: none"> Goods Receipt Shipment instruction Shipment inspection Packing Shipment return
		추적 관리	
		<ul style="list-style-type: none"> LOT tracking (static deployment) LOT tracking (reverse deployment) Bad Tracking Management Manufacturing history tracking 	

MES Main Screen

Prod	Plan	Result	Receipt	Plan Rate	Receipt Rate	Goods QTY	Plan QTY	Result QTY
PW	342,421	224,441	212,740	94.7%	11.881	1.4	17.0	1.9
IP	985,111	644,915	582,021	87.3%	84.894	2.6	20.0	3.3
BEC	1,740	1,722	1,722	100.0%	5.6	16.0	4.1	
MF	58,244	30,400	28,858	94.9%	1,542	0.9	8.0	1.4
Sensor	62,949	51,792	49,482	95.5%	2,310	2.1	6.0	1.7
ABS	74,162	52,540	51,120	97.3%	1,440	1.8	11.0	2.3
RY	404,080	241,152	236,096	93.1%	25,056	3.8	8.0	2.3

Monitoring product receipt status

Prod	Plan	Result	Plan Rate	Result Rate	Goods QTY	Plan QTY	Result QTY
PW	315,730	328,747					
IP	1,452,507	1,270,458					
BEC	1,740	1,894					
MF	41,934	21,048					
Sensor	37,919	24,762					
ABS	425,441	345,522					
RY	764,440	655,470					

Monitoring product receipt status

Prod	Plan	Result	Plan Rate	Result Rate	Goods QTY	Plan QTY	Result QTY
PW	3,440,131	2,649,313	77.0%				
IP	1,452,507	1,270,458					
BEC	1,740	1,894					
MF	41,934	21,048					
Sensor	37,919	24,762					
ABS	425,441	345,522					
RY	764,440	655,470					

Monitoring Monthly Production Status



Availability Chart

Sales Plan Monitoring

Prod	Sales Plan			Outgoing Result			Remain Qty	Shipping Rate
	Items	Cashs	Plan Qty	Items	Cashs	Shipped Qty		
Total	381	56	1,651,814	340	64	1,119,443	532,371	67.8%
PW	102	15	305,856	91	19	180,328	125,528	59.0%
IP	237	38	758,965	223	44	524,846	234,119	69.2%
BEC	9	3	7,620	4	2	1,440	6,180	18.9%
MF	10	5	31,100	5	5	21,226	9,874	63.8%
Sensor	8	9	56,957	6	7	24,476	32,481	43.0%
ABS	6	3	94,332	3	3	93,239	1,093	98.8%
RY	9	3	396,984	8	3	273,888	123,096	69.0%

16:14

1,651,814

1,119,443

67.8%

Sales plan for this month shipment status

Prod	Plan	Result	Plan Rate	Result Rate	Goods QTY	Plan QTY	Result QTY
PW	3,440,131	2,649,313	77.0%				
IP	1,452,507	1,270,458					
BEC	1,740	1,894					
MF	41,934	21,048					
Sensor	37,919	24,762					
ABS	425,441	345,522					
RY	764,440	655,470					

Weekly production status monitoring



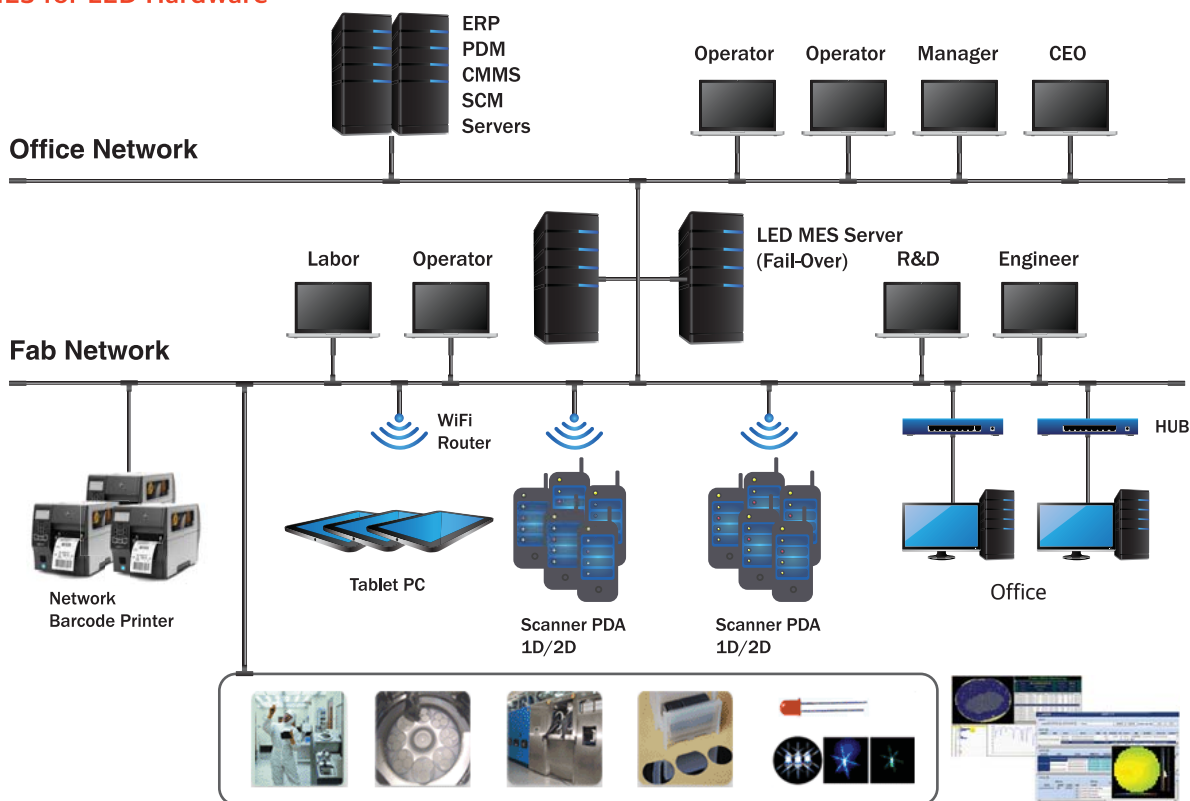
fastMES for LED

fastMES for LED solution is a specialized semiconductor solution tailored to the semiconductor industry that manufactures LED chips. It is a specialized semiconductor solution for PSS, EPI, CHIP processes, covering everything from goods receipt to shipment.

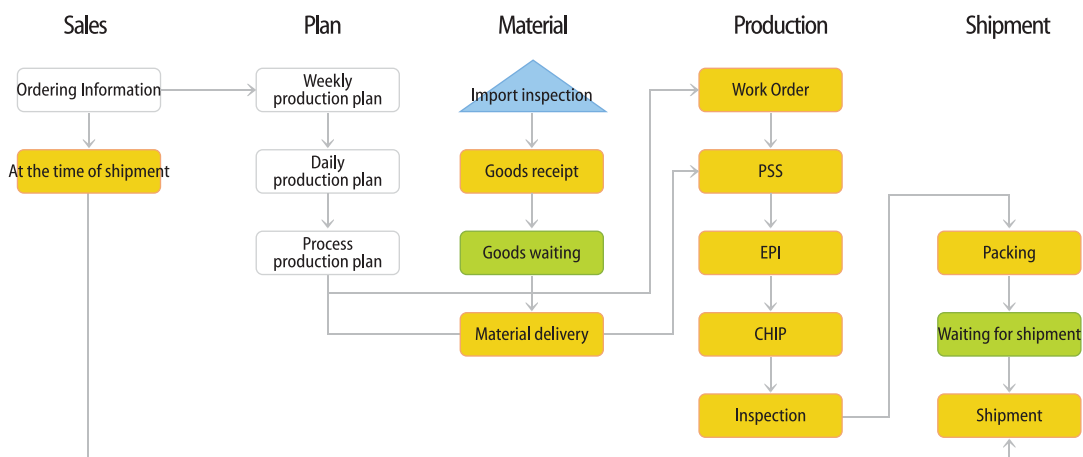
Benefit

Real-time process information collection analysis / Precise cause tracking on abnormal yield / Automatic generation of tag and report by customer / Real-time quality tracking by customer / Automatic quality determination of measurement data / Cost standardization

MES for LED Hardware



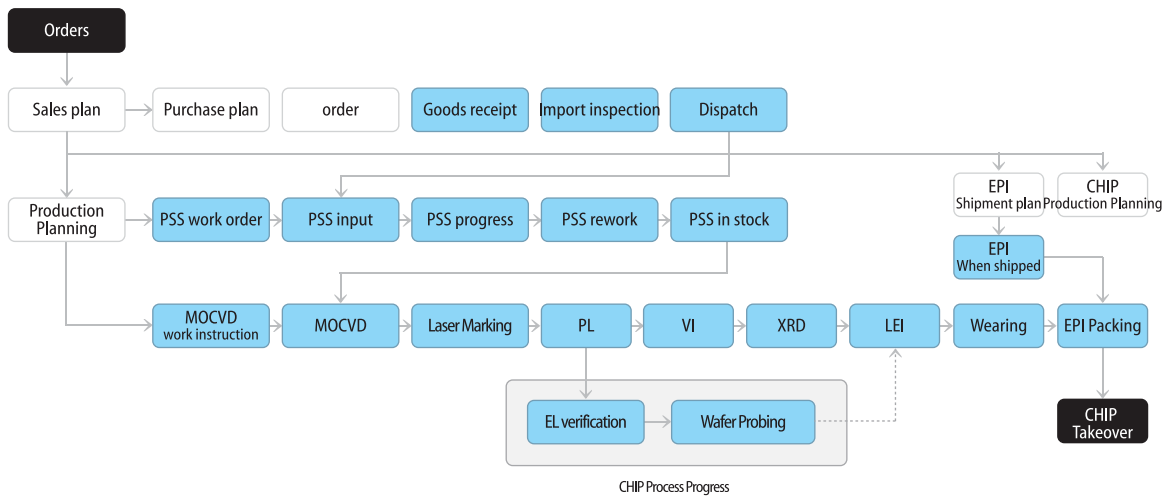
MES for LED Process



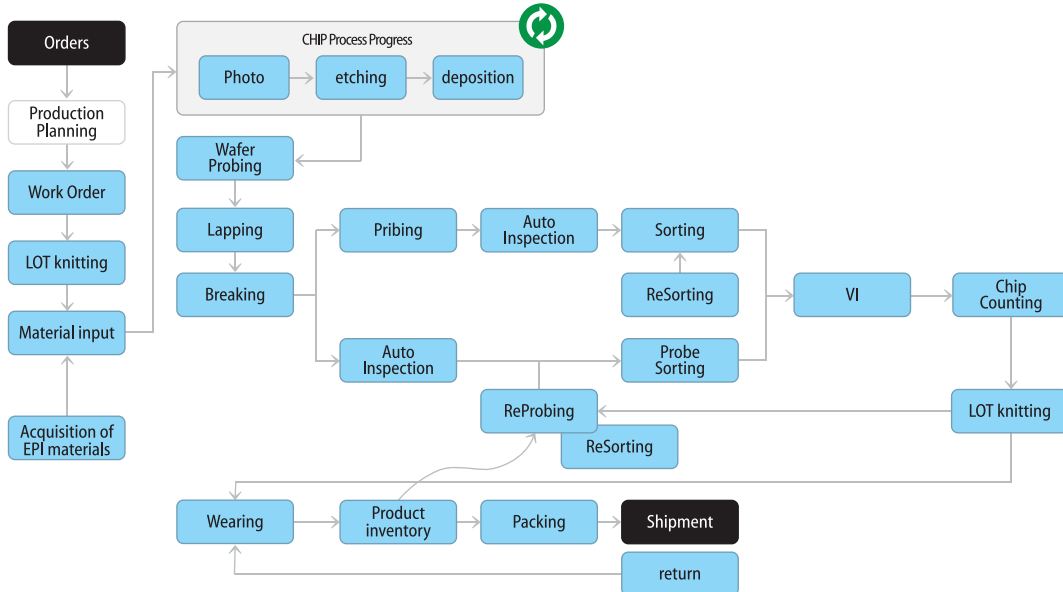
PSS~EPI, CHIP Process

Main process data from sapphire wafer wearing to pattern, MOCVD EPI growth, chip processing probe and sorting are managed to the lowest unit chip level, and forward / reverse tracking from chip level to wafer and carrier lot is possible

PSS~EPI



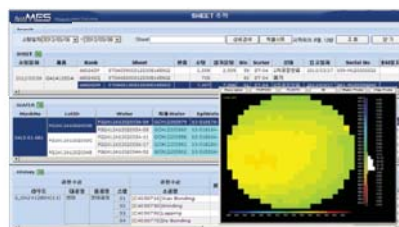
CHIP



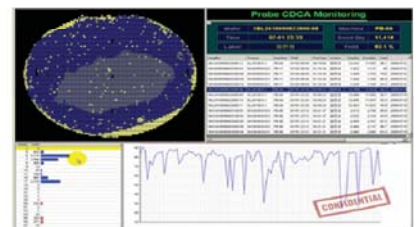
MES for LED Main Screen



LED MES MAIN



Chip Unit Tracking from Sheet to Wafer



Real-Time Quality Analysis



Analysis of measurement performance



CHIP yield analysis



Real-time equipment operation status



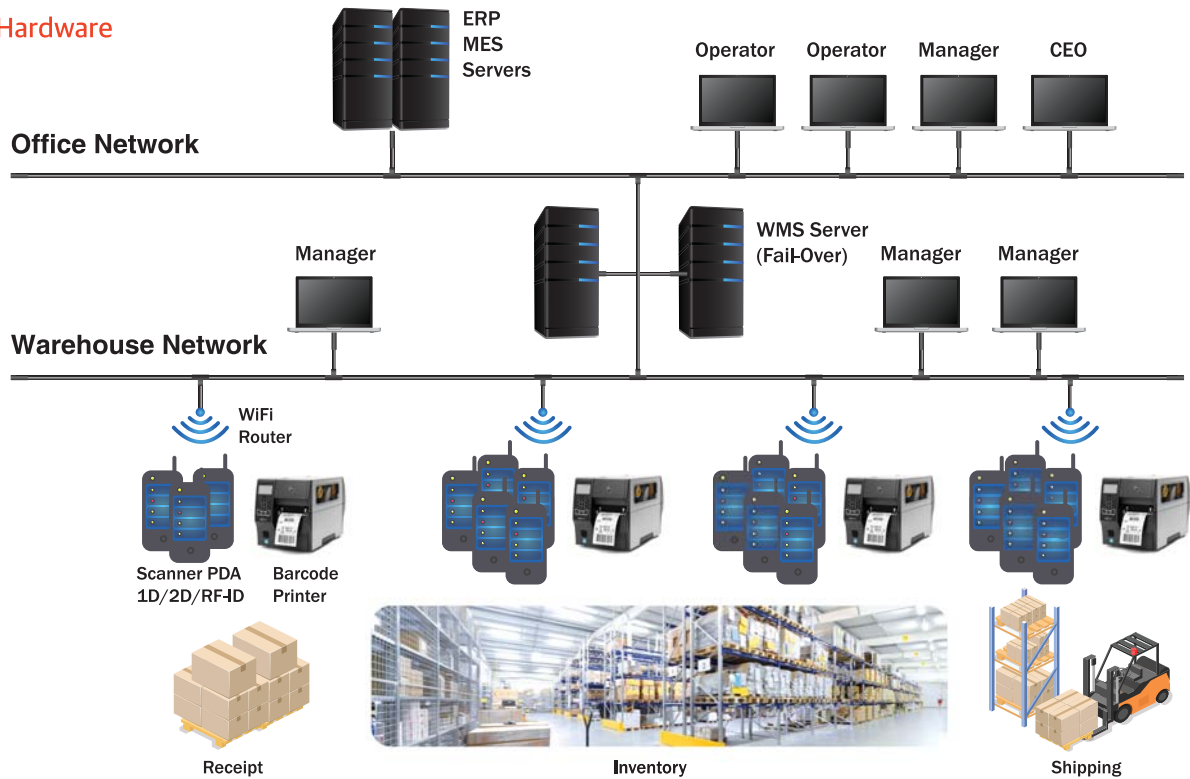
fastWMS

fastWMS is a warehouse and inventory management system based on complex logistics environment and business characteristics. It manages the ordering, goods receipt, order management, picking, warehouse, inventory management, Logistics solution.

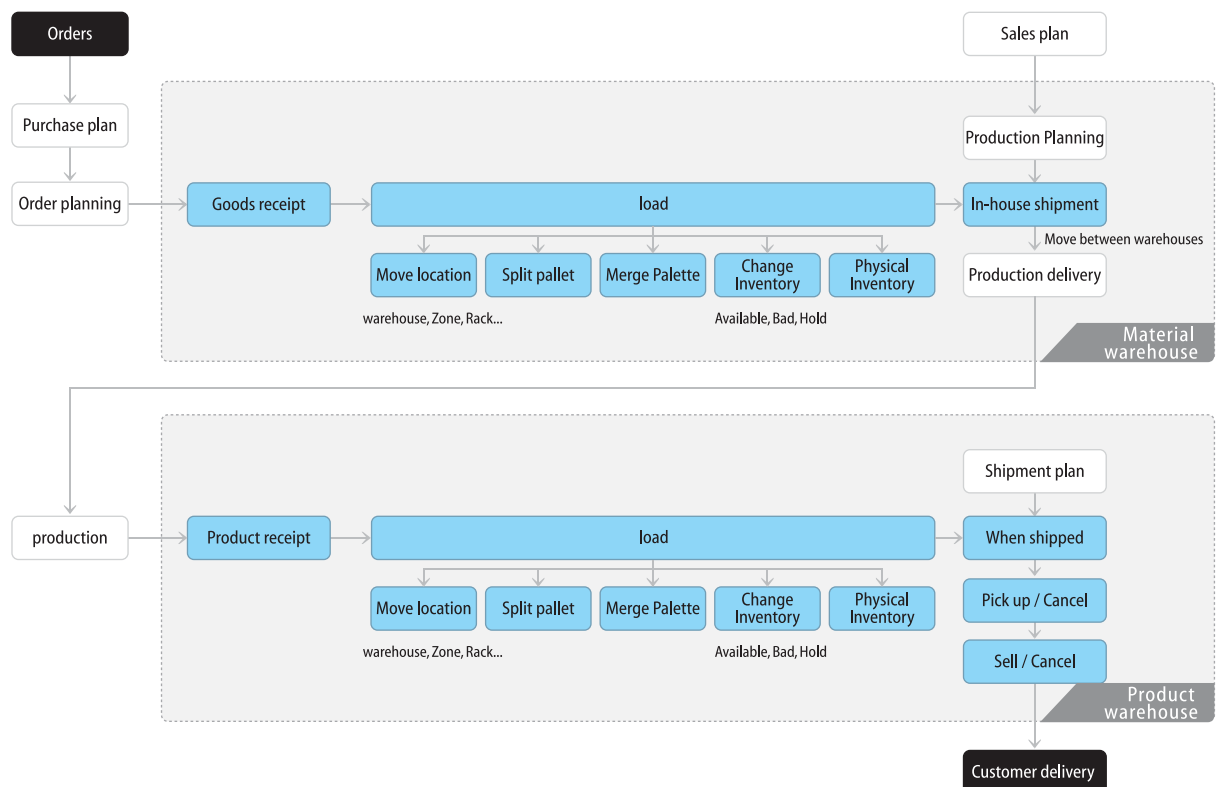
Benefit

Inventory accuracy and real-time inventory check management / Load space efficiency and first-in / first-out ability / Effective manpower management by shortening work time from goods receipt to delivery

WMS Hardware



WMS Process



WMS Software

It is a WMS professional solution based on experience of building various warehouse logistics management system in Korea. Using proven solutions that are already in use in the field, you can apply them quickly and maximize warehouse operation efficiency.

Base management	Goods Receipt	Load Management	Inventory management
<ul style="list-style-type: none"> Item code management Packing unit management Warehouse Code Management Factory code management User / Operator Management System permissions management Code Master Management 	<ul style="list-style-type: none"> Purchasing Goods Receipt Moving between warehouses Stock Status Return Status Management of the unit cost of goods receipt 	<ul style="list-style-type: none"> Load Location Management Pallet configuration Dismantling pallet Label Issued load ZONE Management 	<ul style="list-style-type: none"> Inventory Status Inventory Status by Load Position Split pallet Merge pallet Change inventory status Label Issued Move load location Physical Inventory

Shipment management
<ul style="list-style-type: none"> In-house shipment Factory Management Picking Picking Status Cancel picking Selling goods Cancel goods issue Issuance of waybill / statement Goods history



WMS Main Screen



Warehouse monitoring



Picking status



Daily shipment status



PDA Picking Sample Screen



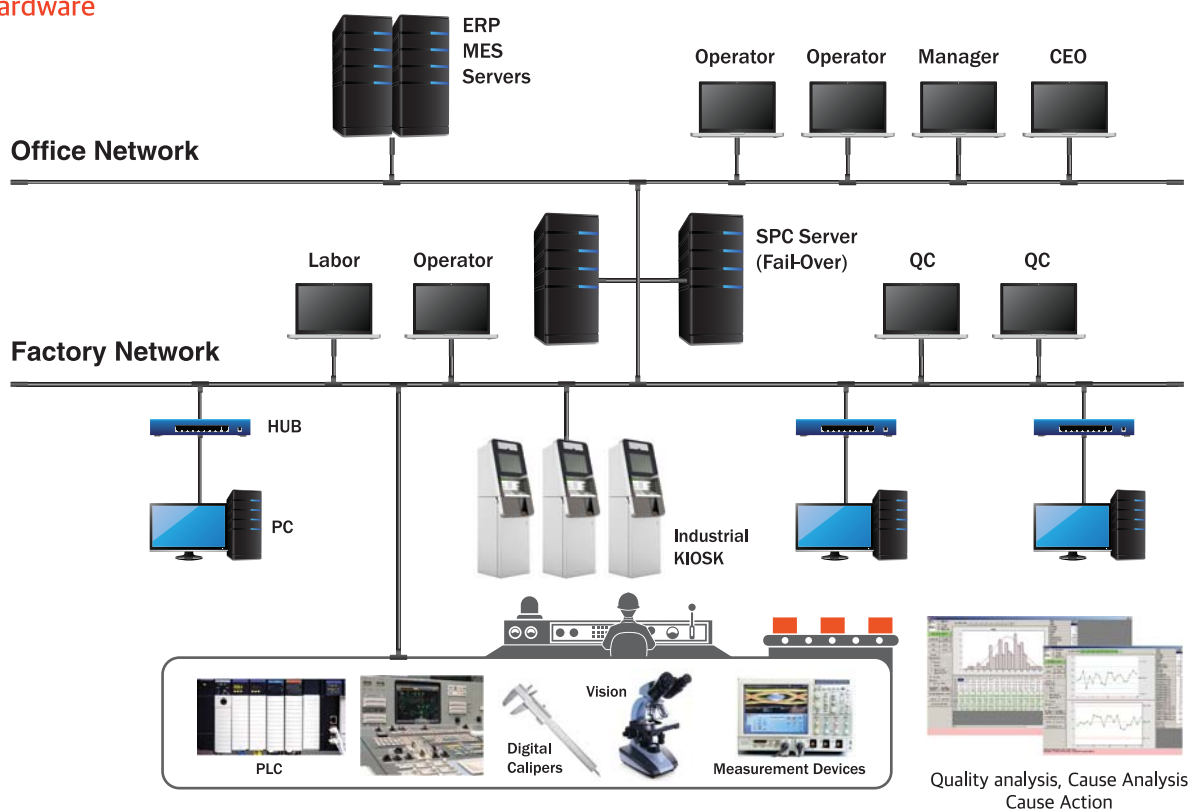
fastSPC

fastSPC is a statistical process management system that collects various inspection information from production process in real time, analyzes quality with 6 Sigma quality control analysis technique, and provides analysis result in real time to maintain stable process condition.

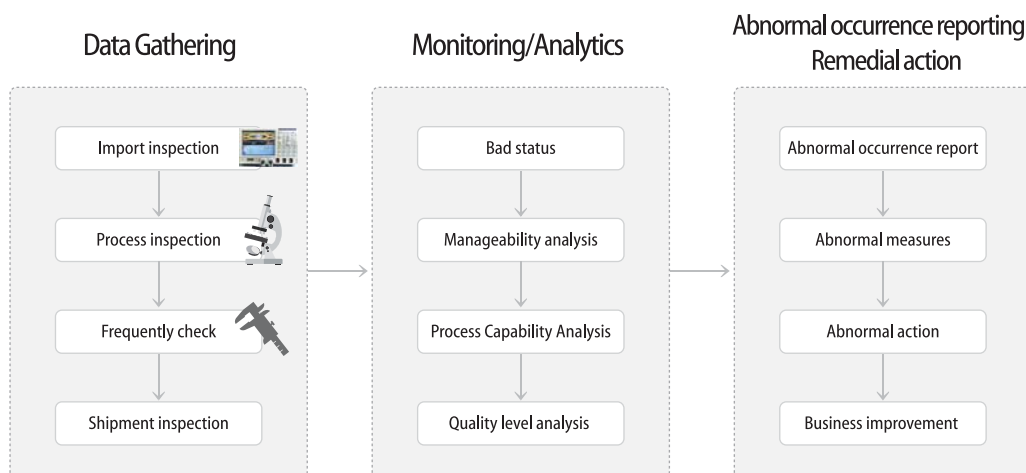
Benefit

Real-time quality analysis management (Histogram, Normal Distribution, XBar-R, XBar-S, NP, P, I-MR)
Standardization of inspection standard / Maximization of field data utilization / Real time process feedback /
Establishment of incidence reporting system

SPC Hardware



SPC Process



SPC Software

By collecting all the data related to the quality (process, equipment, work, etc.) generated at the production site and analyzing various graphs of the indicators with statistical quality control technique, real-time analysis, measures and measures can be made on the process status

Base management

- process code management
- Item Code Management
- Inspection Standard Management
- Measurement drawing management
- User / Operator Management
- Instrument Management
- Inspector certification management

Data collection

- Import inspection
- Process inspection
- Frequently check
- Interweave water inspection
- Circuit inspection
- Shipment inspection

Monitoring

- Monitoring by line
- Monitoring by management item
- Integrated dispersion monitoring
- Abnormal occurrence monitoring
- Special management item monitoring

Abnormal

- Abnormal occurrence report
- Abnormal measures
- Abnormal action
- Abnormal history

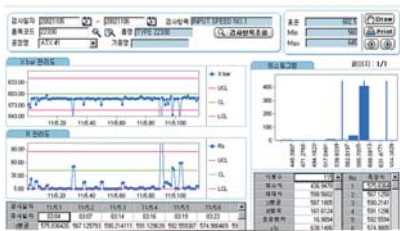
Quality Analysis

- Weekly / Monthly yield analysis
- View bad status
- Inferior factor inquiry
- Analysis of bad factor TOP10
- Poor trend analysis
- Np control chart
- I-MR management chart
- Xbar-R control chart
- Xbar-S control chart
- Histogram
- Cp, Cpk

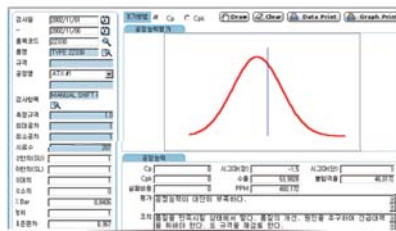
Comprehensive Analysis

- Capability Analysis
- Quality Level Analysis
- Process capability trend
- Sigma trend
- NG analysis
- Comprehensive Worst analysis

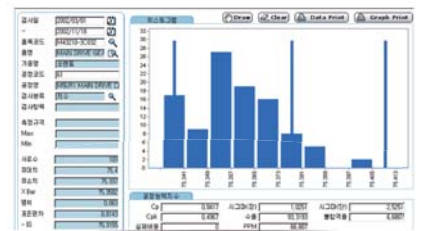
SPC Main Screen



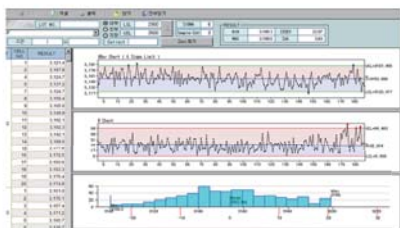
Total quality analysis



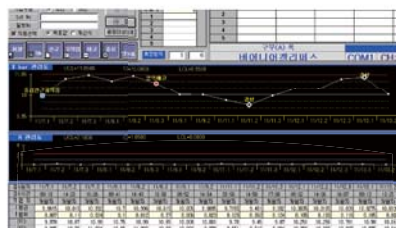
Process capability evaluation



Histogram & quot



Manageability analysis



Process anomaly prediction and measurement



Monitoring by Process Capability



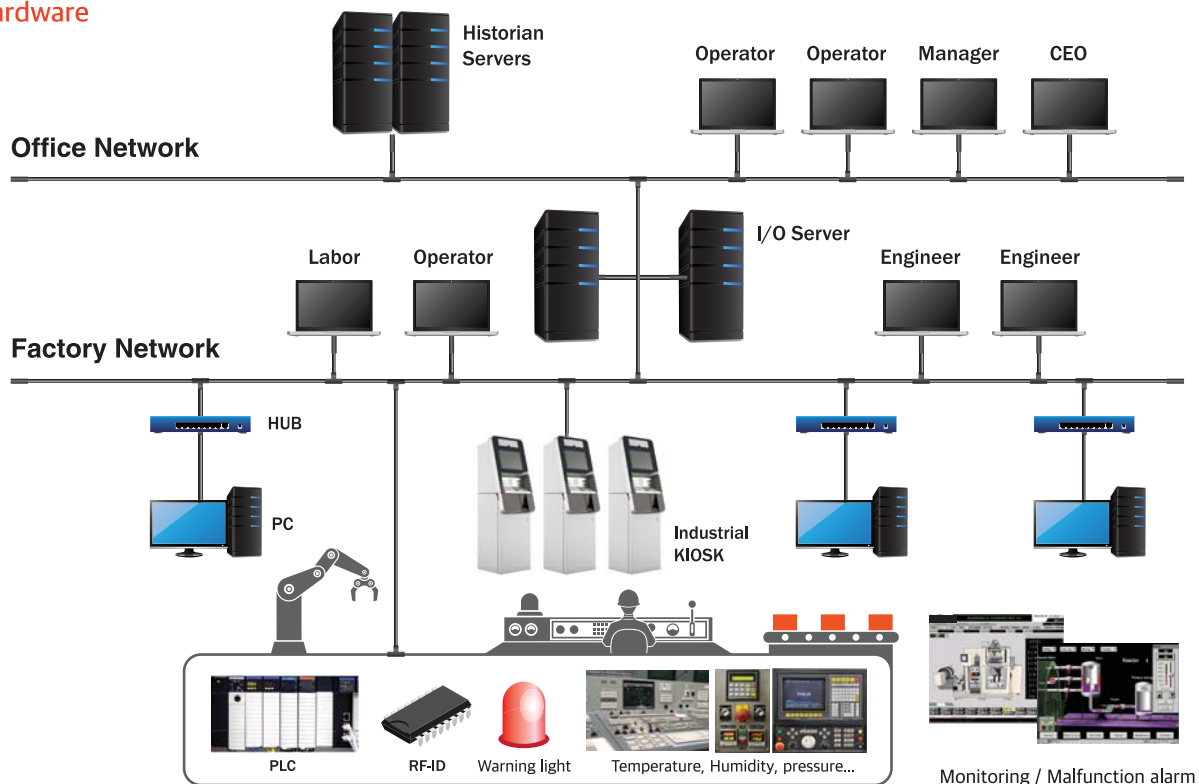
fastHMI

fastHMI combines the functions of HMI and POP (Point of Production) to provide an intuitive and easy-to-understand interface between operators and facilities, and collects, formats, and combines data from various facilities to enable full and detailed equipment monitoring.

Benefit

Reduces development and maintenance time by using InTouch, a specialized HMI tool. Provides independent animation for each facility. Displays real-time trend of analog data change.

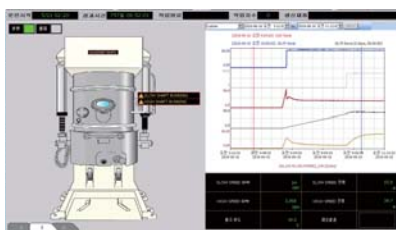
HMI Hardware



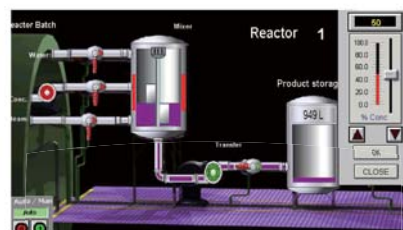
HMI Main Screen



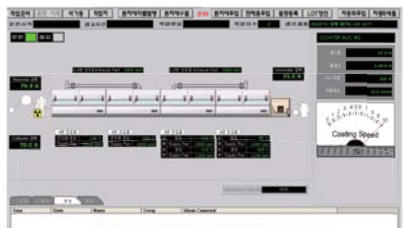
Process monitoring



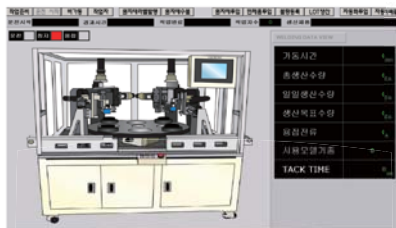
Process monitoring



Process monitoring



Process monitoring

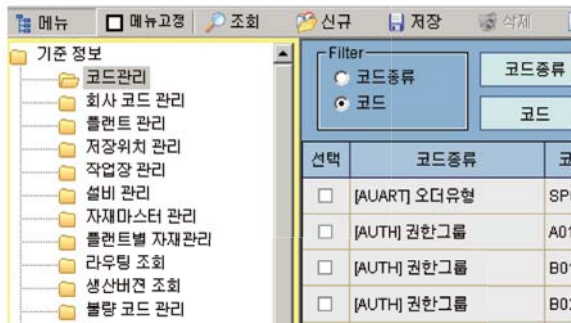


Process monitoring



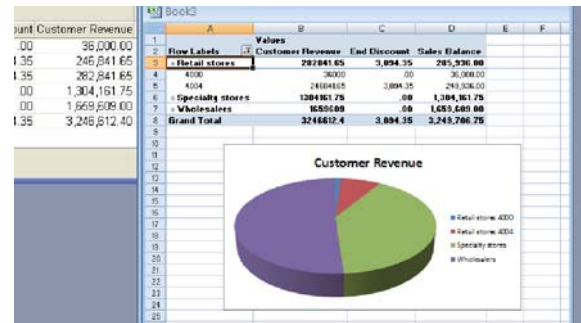
Process monitoring

Haesol Smart Factory Solution is easy and simple for anyone to access.



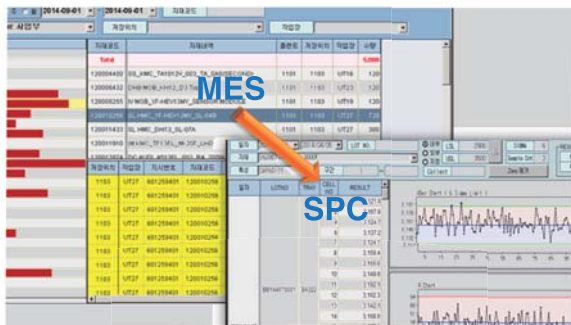
Intuitive UI

Easy-to-access folder-type menu structure allows you to grasp the overall menu structure at a glance. We also have an interface that minimizes loading for fast and easy use



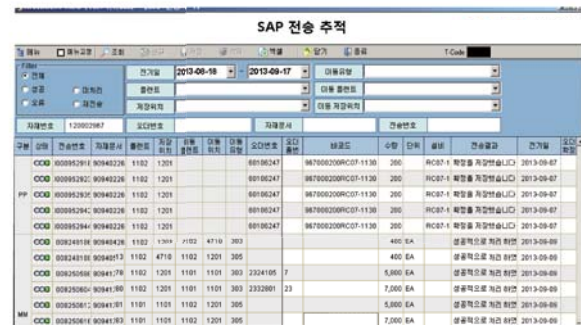
Easy to use

Most screens support Excel download. You can receive data in the form of an Excel report on the retrieved data and easily edit the Excel file



Flexible linkage with other systems

A flexible connection environment of other systems and related data is provided. XML-based data exchange interfaces are supported, allowing for convenient screen switching and rapid and accurate decision-making.



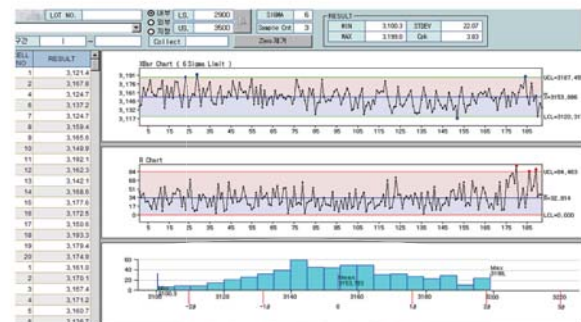
Increase work efficiency

You can organize your work and information in one window, manage errors in the system as messages, and track transmission of SAP I / F items



Real-time visualization and control

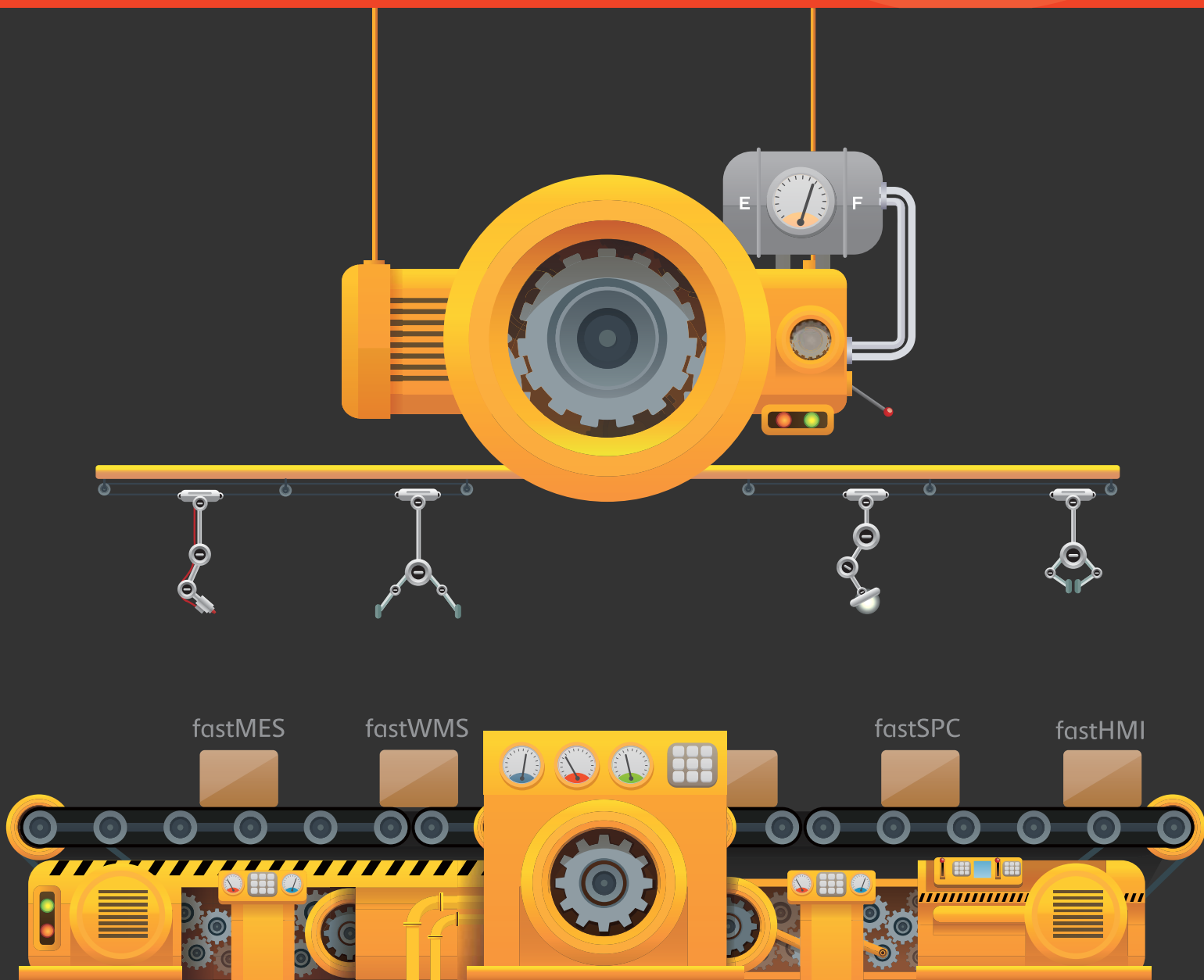
You can visualize and control critical plant processes in real time, so you can more accurately determine your current situation and take the necessary action



Efficient Quality Control

By analyzing the cause of defective product and process status in real time and performing statistical analysis visualized, we support efficient quality control activities

Korean smart factory model optimized for SMEs
Haesol Information Systems comes with



HAESOL

Haesol Information Systems Co., Ltd. / CEO : Han Kabsu / Business Number : 305-86-05020

Address : 5F, 56-1, Guun-ro 63bungil, Gwonseon-gu, Suwon-si, Gyeonggi-do, Korea

TEL: +82(0)31-296-2270 / FAX: +82(0)31-291-7259 / EMAIL: help@haesol.net

www.haesol.net